

earthly pilgrimage that has been laid aside, and death, for such as she, is but the gate to a wider and fuller life.

Miss S. L. F. M. Tompkins, S.R.N., M.B.C.N.

We also have to regretfully report the death, through enemy action, of Miss Sybil Lilian Frances Mary Tompkins, a valued member of the British College of Nurses. Miss Tompkins received her training at King's College Hospital, London, and later held the post of Ward Sister at St. Stephen's Hospital, Fulham. She was a young and very

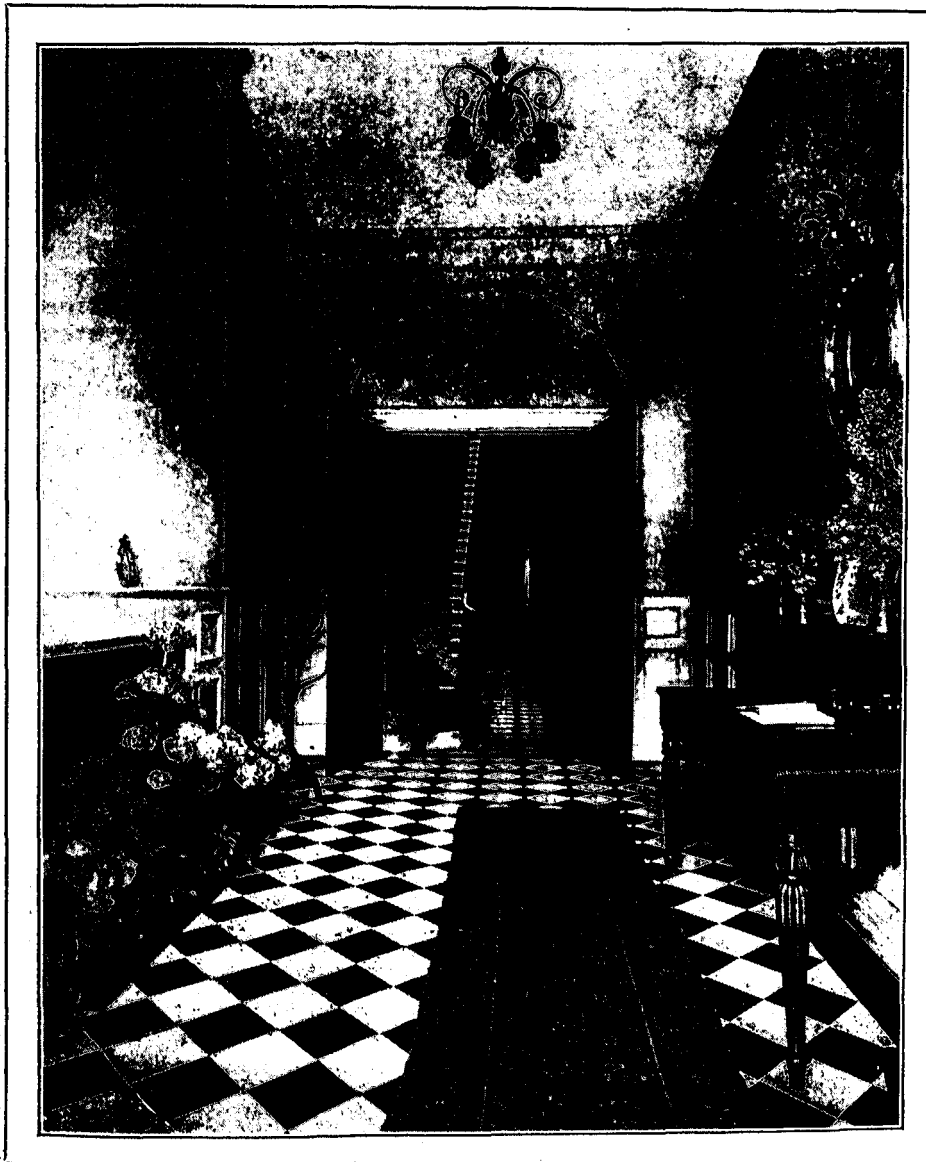
39, PORTLAND PLACE, IN RUINS.

When in 1938 the lease of No. 39, Portland Place, W.1, expired, and further residence in this lovely Adam house became prohibitive, we own to acute heartache, but thanks to a broken leg we did not see the Lares and Penates of the College removed. Since which time nothing could have been more happy than the continuation of College activities at 19, Queen's Gate, where as if by a miracle a place awaited all our beautiful possessions, and every activity has been allotted ample space.

But we feel all our members who enjoyed the beauty and happy gatherings at Portland Place will feel with us bitter indignation that this period mansion has been smashed by German bombs and is in ruins. The beautiful Flaxman decorations of the spacious drawing-rooms, the splendid mahogany doors, polished floors, and inlaid marble halls are a glory of the past, and we who enjoyed their beauty for twelve years deeply regret their devastation.

To look back on one day only, the 11th of July, 1937, when our National Council of Nurses welcomed the Nurse delegates from thirty countries attending the Quadrennial Congress of the International Council of Nurses will never be forgotten. The interior of the house a bower of lovely plants and flowers, honoured guests seated in gilded chairs, speeches of welcome and graceful replies; a real English tea — fruits and cakes and flowers and happy laughter. Nurses from every country now in the agony of grief and pain through the barbarous cruelty and greed of evil and tyrannical men.

The demolition of 39, Portland Place, is grievous indeed, but what of our national glories? Cathedrals, churches, hospitals, palaces, historic places, works of art? What indeed? There is only one way to deal with ruthless destroyers of life and fame, and it is time our generous people realised it, and exterminated them for the mad fiends they are.



THE ENTRANCE HALL, 39, PORTLAND PLACE, LONDON, W.1.

active member of the Profession, and will be much missed by her colleagues.

Mrs. Elizabeth A. Marden, S.R.N., M.B.C.N.

News has come of the loss of yet another valued Member of the College through enemy action—Mrs. Elizabeth A. Marden. Mrs. Marden, née Davies, was trained at the Salford Royal Hospital, was a State Certified Midwife, and held the Certificate of Queen Victoria's Jubilee Institute for Nurses, now known as the Queen's Institute of District Nursing. The sympathy of her colleagues will go out to her daughter in this sad and sudden bereavement.

AN HONOUR FOR MISS G. M. HARDY, S.R.N. M.B.C.N.

Miss G. M. Hardy, S.R.N., D.N., M.B.C.N., has been made an Honorary Life Member of the British Red Cross Society, for which she has many times lectured and examined. Miss Hardy was trained at the North Staffordshire Royal Infirmary, Stoke-on-Trent, held posts as Sister and Home Sister, and was also Sister Tutor at Charing Cross Hospital. She is now Matron at the Battersea General Hospital, and a very valued and active member of the British College of Nurses.

previous page

next page